

| NO. | DATE | DESCRIPTION |
|-----|------------|-------------------|
| 1 | 07/11/2023 | ISSUED FOR PERMIT |

GREENLEAF ID: _____

| DATE | BY | SCALE |
|------------|-------|-----------|
| 07/11/2023 | _____ | 1" = 100' |

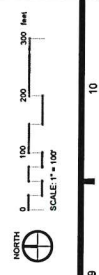
LANDSCAPE PLAN - OVERALL:

SITE REQUIREMENTS
 COMMON LOTS: 208,000 SF REG. / 730,250 SF PROVIDED

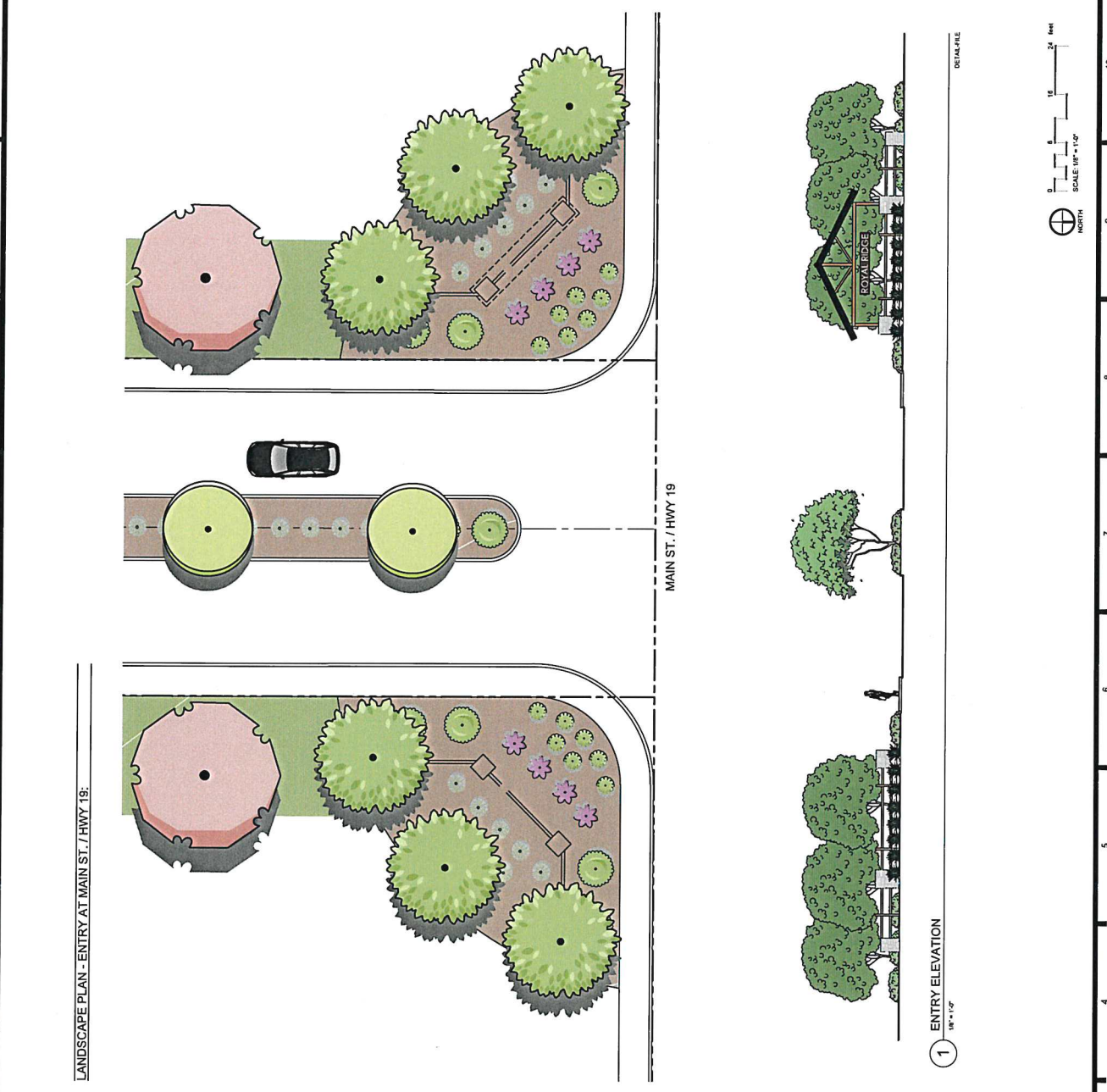
| PLANT SCHEDULE | SYMBOL | COL. | SIZE | QTY |
|----------------|----------|------|-------|-----|
| SPRINGS | (Symbol) | 18B | 2" | 29 |
| SPRINGS | (Symbol) | 18B | 2" | 29 |
| SPRINGS | (Symbol) | 18B | 2" | 21 |
| SPRINGS | (Symbol) | 18B | 2" | 58 |
| SPRINGS | (Symbol) | 18B | 2" | 9 |
| SPRINGS | (Symbol) | 18B | 2" 6M | 15 |
| SPRINGS | (Symbol) | 18B | 2" | 42 |
| SPRINGS | (Symbol) | 18B | 2" 6M | 12 |
| SPRINGS | (Symbol) | 18B | 2" 6M | 16 |
| SPRINGS | (Symbol) | 18B | 2" | 29 |
| SPRINGS | (Symbol) | 18B | 2" | 28 |
| SPRINGS | (Symbol) | 18B | 2" | 35 |
| SPRINGS | (Symbol) | 18B | 2" | 11 |
| SPRINGS | (Symbol) | 18B | 2" | 48 |

LANDSCAPE MATERIALS LEGEND:

- SOIL LAWN
- ROCK BALCH
- SHRUBBERD WOOD
- OPEN FENCE
- PRIVACY FENCE



THIS DRAWING IS THE PROPERTY OF STACK ROCK GROUP, INC. AND IS NOT TO BE COPIED, REPRODUCED, REVISED, EITHER WHOLLY OR IN PART, OR FOR ANY OTHER PURPOSES WITHOUT THE WRITTEN PERMISSION OF STACK ROCK GROUP, INC.



PLANT SCHEDULE

| TREES | BOTANICAL / COMMON NAME | COHT | GAL. | SIZE | QTY |
|-------|---|------|------|------|-----|
| | Katy Blueberry / Common Blueberry / Parkway Maple | SAB | 2" | | 20 |
| | Blackberry | SAB | 2" | | 20 |
| | Common Blueberry / Common Blueberry | SAB | 2" | | 21 |
| | Common Blueberry / Common Blueberry | SAB | 2" | | 21 |
| | Common Blueberry / Common Blueberry | SAB | 2" | | 21 |
| | Common Blueberry / Common Blueberry | SAB | 2" | | 21 |
| | Common Blueberry / Common Blueberry | SAB | 2" | | 21 |
| | Common Blueberry / Common Blueberry | SAB | 2" | | 21 |
| | Common Blueberry / Common Blueberry | SAB | 2" | | 21 |
| | Common Blueberry / Common Blueberry | SAB | 2" | | 21 |
| | Common Blueberry / Common Blueberry | SAB | 2" | | 21 |
| | Common Blueberry / Common Blueberry | SAB | 2" | | 21 |
| | Common Blueberry / Common Blueberry | SAB | 2" | | 21 |
| | Common Blueberry / Common Blueberry | SAB | 2" | | 21 |
| | Common Blueberry / Common Blueberry | SAB | 2" | | 21 |
| | Common Blueberry / Common Blueberry | SAB | 2" | | 21 |
| | Common Blueberry / Common Blueberry | SAB | 2" | | 21 |
| | Common Blueberry / Common Blueberry | SAB | 2" | | 21 |
| | Common Blueberry / Common Blueberry | SAB | 2" | | 21 |
| | Common Blueberry / Common Blueberry | SAB | 2" | | 21 |
| | Common Blueberry / Common Blueberry | SAB | 2" | | 21 |
| | Common Blueberry / Common Blueberry | SAB | 2" | | 21 |
| | Common Blueberry / Common Blueberry | SAB | 2" | | 21 |
| | Common Blueberry / Common Blueberry | SAB | 2" | | 21 |
| | Common Blueberry / Common Blueberry | SAB | 2" | | 21 |
| | Common Blueberry / Common Blueberry | SAB | 2" | | 21 |
| | Common Blueberry / Common Blueberry | SAB | 2" | | 21 |
| | Common Blueberry / Common Blueberry | SAB | 2" | | 21 |
| | Common Blueberry / Common Blueberry | SAB | 2" | | 21 |
| | Common Blueberry / Common Blueberry | SAB | 2" | | 21 |
| | Common Blueberry / Common Blueberry | SAB | 2" | | 21 |
| | Common Blueberry / Common Blueberry | SAB | 2" | | 21 |
| | Common Blueberry / Common Blueberry | SAB | 2" | | 21 |
| | Common Blueberry / Common Blueberry | SAB | 2" | | 21 |
| | Common Blueberry / Common Blueberry | SAB | 2" | | 21 |
| | Common Blueberry / Common Blueberry | SAB | 2" | | 21 |
| | Common Blueberry / Common Blueberry | SAB | 2" | | 21 |
| | Common Blueberry / Common Blueberry | SAB | 2" | | 21 |
| | Common Blueberry / Common Blueberry | SAB | 2" | | 21 |
| | Common Blueberry / Common Blueberry | SAB | 2" | | 21 |
| | Common Blueberry / Common Blueberry | SAB | 2" | | 21 |
| | Common Blueberry / Common Blueberry | SAB | 2" | | 21 |
| | Common Blueberry / Common Blueberry | SAB | 2" | | 21 |
| | Common Blueberry / Common Blueberry | SAB | 2" | | 21 |
| | Common Blueberry / Common Blueberry | SAB | 2" | | 21 |
| | Common Blueberry / Common Blueberry | SAB | 2" | | 21 |
| | Common Blueberry / Common Blueberry | SAB | 2" | | 21 |
| | Common Blueberry / Common Blueberry | SAB | 2" | | 21 |
| | Common Blueberry / Common Blueberry | SAB | 2" | | 21 |
| | Common Blueberry / Common Blueberry | SAB | 2" | | 21 |

LANDSCAPE MATERIALS LEGEND:

- SOIL BANK
- ROCK/PAVEMENT
- ENGINEERED WOOD
- CHISEL
- OPEN FENCE
- PRIVACY FENCE



STACK ROCK GROUP
 ARCHITECTURE
 A MASTER PLANNING
 (PH) 348-4900
 4000 W. BAYVIEW BLVD
 SUITE 100
 MIAMI, FL 33149
 WWW.STACKROCKGROUP.COM

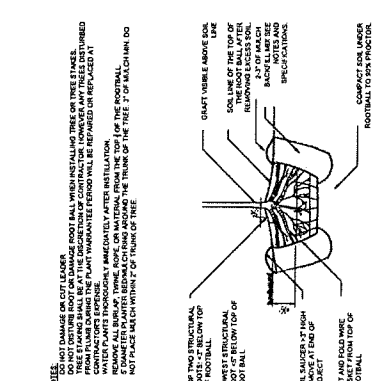
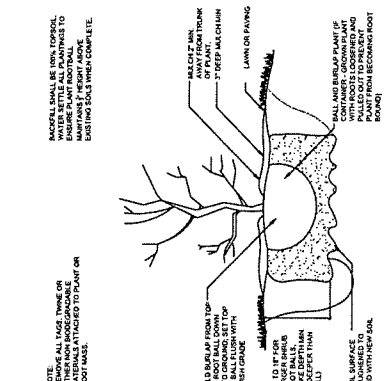
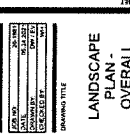
THE GRAPHICS AND DESIGN
 ON THIS SHEET ARE
 THE PROPERTY OF STACK
 ROCK GROUP, INC.
 ALL RIGHTS RESERVED.
 THIS PRODUCT CONTAINS
 TRADEMARKS AND PATENTED
 TECHNOLOGY. ALL RIGHTS
 RESERVED TO STACK ROCK
 GROUP, INC.
 PRELIMINARY

| | |
|------------|------------------|
| DATE | DESCRIPTION |
| 11/11/2011 | ISSUE FOR PERMIT |
| 11/11/2011 | ISSUE FOR PERMIT |
| 11/11/2011 | ISSUE FOR PERMIT |
| 11/11/2011 | ISSUE FOR PERMIT |
| 11/11/2011 | ISSUE FOR PERMIT |

NOT FOR CONSTRUCTION
 ROYAL RIDGE
 GREENE, FL 32041

| | |
|------------|------------------|
| DATE | DESCRIPTION |
| 11/11/2011 | ISSUE FOR PERMIT |
| 11/11/2011 | ISSUE FOR PERMIT |
| 11/11/2011 | ISSUE FOR PERMIT |
| 11/11/2011 | ISSUE FOR PERMIT |
| 11/11/2011 | ISSUE FOR PERMIT |

LANDSCAPE PLAN - OVERALL
 SHEET NUMBER
L100



1 BALL & BURLAP TREE PLANTING
 3/4" = 1'-0"

2 SHRUB PLANTING
 1" = 1'-0"

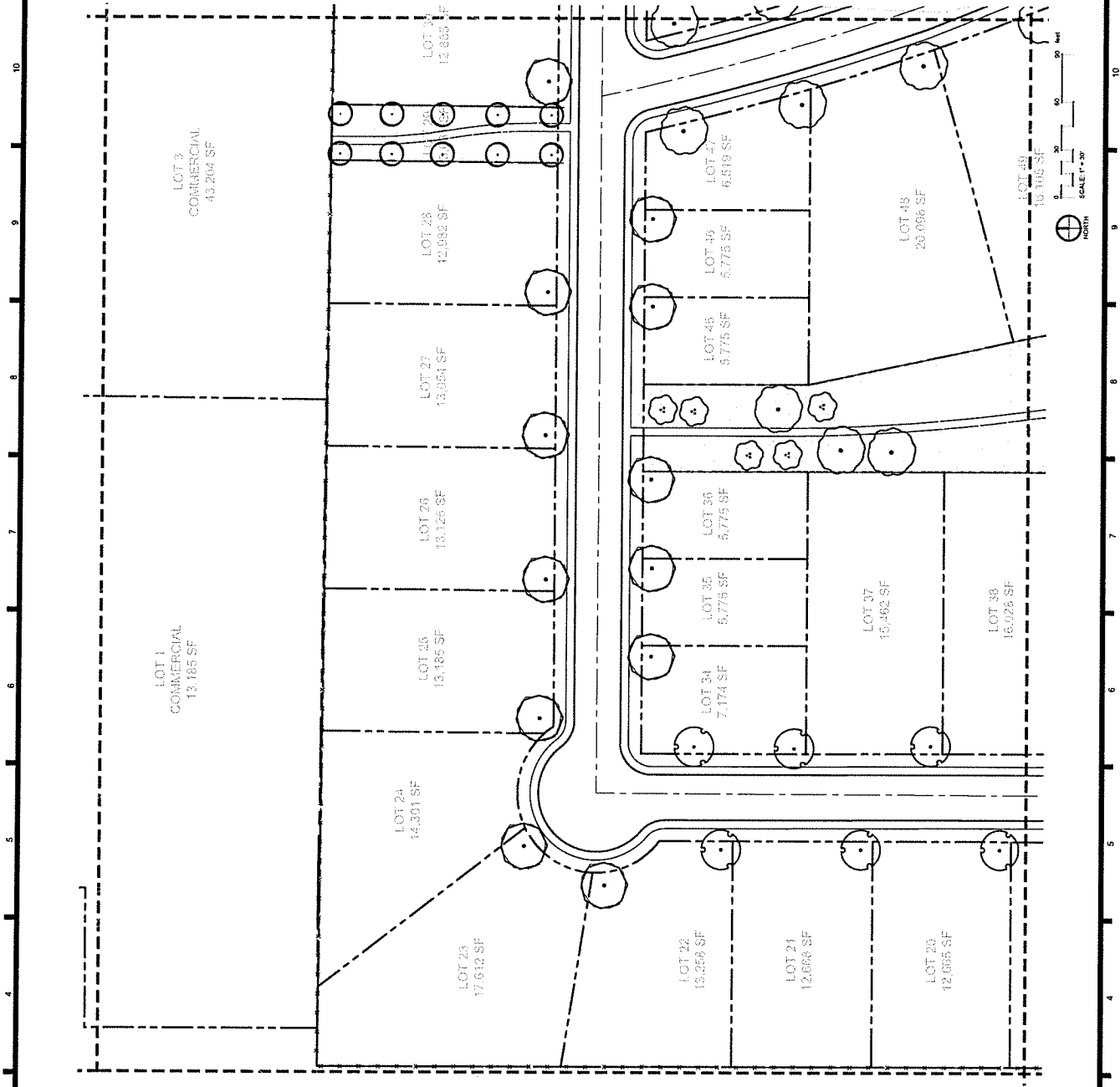
NOTE:
 1. DO NOT CHANGE OR CUT LEAVES
 2. DO NOT DISTURB ROOT OR DAMAGE ROOT BALL WHEN INSTALLING TREE OR TREE STRIKES.
 3. FROM PLANTING DATE TO DATE OF PLANTING, THE PLANTING PERIOD SHALL BE MAINTAINED.
 4. WATER PLANTS THOROUGHLY IMMEDIATELY AFTER INSTALLATION.
 5. GROUND SHALL BE ROLLED, ROLLED, OR MATERIAL FROM THE TOP 1" OF THE FOOTBALL.
 6. DO NOT PLACE MULCH WITHIN 2" OF TRUNK OF TREE.

TOP SOIL STRUCTURE:
 1. DO NOT CHANGE OR CUT LEAVES
 2. DO NOT DISTURB ROOT OR DAMAGE ROOT BALL WHEN INSTALLING TREE OR TREE STRIKES.
 3. FROM PLANTING DATE TO DATE OF PLANTING, THE PLANTING PERIOD SHALL BE MAINTAINED.
 4. WATER PLANTS THOROUGHLY IMMEDIATELY AFTER INSTALLATION.
 5. GROUND SHALL BE ROLLED, ROLLED, OR MATERIAL FROM THE TOP 1" OF THE FOOTBALL.
 6. DO NOT PLACE MULCH WITHIN 2" OF TRUNK OF TREE.

LANDSCAPE PLAN - OVERALL:

LANDSCAPE NOTES:

1. **LANDSCAPE PLAN - OVERALL:**
2. **LANDSCAPE PLAN - OVERALL:**
3. **LANDSCAPE PLAN - OVERALL:**
4. **LANDSCAPE PLAN - OVERALL:**
5. **LANDSCAPE PLAN - OVERALL:**
6. **LANDSCAPE PLAN - OVERALL:**
7. **LANDSCAPE PLAN - OVERALL:**
8. **LANDSCAPE PLAN - OVERALL:**
9. **LANDSCAPE PLAN - OVERALL:**
10. **LANDSCAPE PLAN - OVERALL:**



| ITEMS | QUANTITY | UNIT | DESCRIPTION | DATE | BY |
|-------|----------|-------|----------------------------|----------|-----|
| 1 | 1 | PLANT | 1" x 1" x 1" (CLASS 1) | 11/11/11 | JLD |
| 2 | 1 | PLANT | 2" x 2" x 2" (CLASS 2) | 11/11/11 | JLD |
| 3 | 1 | PLANT | 3" x 3" x 3" (CLASS 3) | 11/11/11 | JLD |
| 4 | 1 | PLANT | 4" x 4" x 4" (CLASS 4) | 11/11/11 | JLD |
| 5 | 1 | PLANT | 5" x 5" x 5" (CLASS 5) | 11/11/11 | JLD |
| 6 | 1 | PLANT | 6" x 6" x 6" (CLASS 6) | 11/11/11 | JLD |
| 7 | 1 | PLANT | 7" x 7" x 7" (CLASS 7) | 11/11/11 | JLD |
| 8 | 1 | PLANT | 8" x 8" x 8" (CLASS 8) | 11/11/11 | JLD |
| 9 | 1 | PLANT | 9" x 9" x 9" (CLASS 9) | 11/11/11 | JLD |
| 10 | 1 | PLANT | 10" x 10" x 10" (CLASS 10) | 11/11/11 | JLD |
| 11 | 1 | PLANT | 11" x 11" x 11" (CLASS 11) | 11/11/11 | JLD |
| 12 | 1 | PLANT | 12" x 12" x 12" (CLASS 12) | 11/11/11 | JLD |
| 13 | 1 | PLANT | 13" x 13" x 13" (CLASS 13) | 11/11/11 | JLD |
| 14 | 1 | PLANT | 14" x 14" x 14" (CLASS 14) | 11/11/11 | JLD |
| 15 | 1 | PLANT | 15" x 15" x 15" (CLASS 15) | 11/11/11 | JLD |
| 16 | 1 | PLANT | 16" x 16" x 16" (CLASS 16) | 11/11/11 | JLD |
| 17 | 1 | PLANT | 17" x 17" x 17" (CLASS 17) | 11/11/11 | JLD |
| 18 | 1 | PLANT | 18" x 18" x 18" (CLASS 18) | 11/11/11 | JLD |
| 19 | 1 | PLANT | 19" x 19" x 19" (CLASS 19) | 11/11/11 | JLD |
| 20 | 1 | PLANT | 20" x 20" x 20" (CLASS 20) | 11/11/11 | JLD |
| 21 | 1 | PLANT | 21" x 21" x 21" (CLASS 21) | 11/11/11 | JLD |
| 22 | 1 | PLANT | 22" x 22" x 22" (CLASS 22) | 11/11/11 | JLD |
| 23 | 1 | PLANT | 23" x 23" x 23" (CLASS 23) | 11/11/11 | JLD |
| 24 | 1 | PLANT | 24" x 24" x 24" (CLASS 24) | 11/11/11 | JLD |
| 25 | 1 | PLANT | 25" x 25" x 25" (CLASS 25) | 11/11/11 | JLD |
| 26 | 1 | PLANT | 26" x 26" x 26" (CLASS 26) | 11/11/11 | JLD |
| 27 | 1 | PLANT | 27" x 27" x 27" (CLASS 27) | 11/11/11 | JLD |
| 28 | 1 | PLANT | 28" x 28" x 28" (CLASS 28) | 11/11/11 | JLD |
| 29 | 1 | PLANT | 29" x 29" x 29" (CLASS 29) | 11/11/11 | JLD |
| 30 | 1 | PLANT | 30" x 30" x 30" (CLASS 30) | 11/11/11 | JLD |
| 31 | 1 | PLANT | 31" x 31" x 31" (CLASS 31) | 11/11/11 | JLD |
| 32 | 1 | PLANT | 32" x 32" x 32" (CLASS 32) | 11/11/11 | JLD |
| 33 | 1 | PLANT | 33" x 33" x 33" (CLASS 33) | 11/11/11 | JLD |
| 34 | 1 | PLANT | 34" x 34" x 34" (CLASS 34) | 11/11/11 | JLD |
| 35 | 1 | PLANT | 35" x 35" x 35" (CLASS 35) | 11/11/11 | JLD |
| 36 | 1 | PLANT | 36" x 36" x 36" (CLASS 36) | 11/11/11 | JLD |
| 37 | 1 | PLANT | 37" x 37" x 37" (CLASS 37) | 11/11/11 | JLD |
| 38 | 1 | PLANT | 38" x 38" x 38" (CLASS 38) | 11/11/11 | JLD |
| 39 | 1 | PLANT | 39" x 39" x 39" (CLASS 39) | 11/11/11 | JLD |
| 40 | 1 | PLANT | 40" x 40" x 40" (CLASS 40) | 11/11/11 | JLD |
| 41 | 1 | PLANT | 41" x 41" x 41" (CLASS 41) | 11/11/11 | JLD |
| 42 | 1 | PLANT | 42" x 42" x 42" (CLASS 42) | 11/11/11 | JLD |
| 43 | 1 | PLANT | 43" x 43" x 43" (CLASS 43) | 11/11/11 | JLD |
| 44 | 1 | PLANT | 44" x 44" x 44" (CLASS 44) | 11/11/11 | JLD |
| 45 | 1 | PLANT | 45" x 45" x 45" (CLASS 45) | 11/11/11 | JLD |
| 46 | 1 | PLANT | 46" x 46" x 46" (CLASS 46) | 11/11/11 | JLD |
| 47 | 1 | PLANT | 47" x 47" x 47" (CLASS 47) | 11/11/11 | JLD |
| 48 | 1 | PLANT | 48" x 48" x 48" (CLASS 48) | 11/11/11 | JLD |
| 49 | 1 | PLANT | 49" x 49" x 49" (CLASS 49) | 11/11/11 | JLD |

LANDSCAPE MATERIALS LEGEND:

- 500 LAMM
- ROCKMULCH
- BACKFILLED WOOD CHIPS
- OPEN FENCE
- FRANCY FENCE



STOCK ROCK GROUP
 ARCHITECTURE
 A MASTERPLANNING
 (904) 348-9000
 10000 N.W. 11th St.
 Suite 100, Ft. Lauderdale, FL 33304
 www.stockrockgroup.com

THE GRAPHICS AND DESIGN
 ON THIS SHEET ARE
 AT ALL TIMES PROPERTY OF
 STOCK ROCK GROUP, INC.
 THIS PRODUCT CONTAINS
 INFORMATION UNLESS
 OTHERWISE INDICATED
 WITHIN IT. ANY UNLAWFUL
 REPRODUCTION OR
 TRANSMISSION OF THIS
 DOCUMENT IN ANY FORM
 OR BY ANY MEANS, ELECTRONIC
 OR MECHANICAL, INCLUDING
 PHOTOCOPYING, RECORDING,
 OR BY ANY INFORMATION
 STORAGE AND RETRIEVAL
 SYSTEM, WITHOUT THE
 EXPRESS WRITTEN
 PERMISSION OF STOCK ROCK
 GROUP, INC. IS PROHIBITED.
 © 2011 STOCK ROCK
 GROUP, INC.

DATE: PRELIMINARY
 NOT FOR CONSTRUCTION

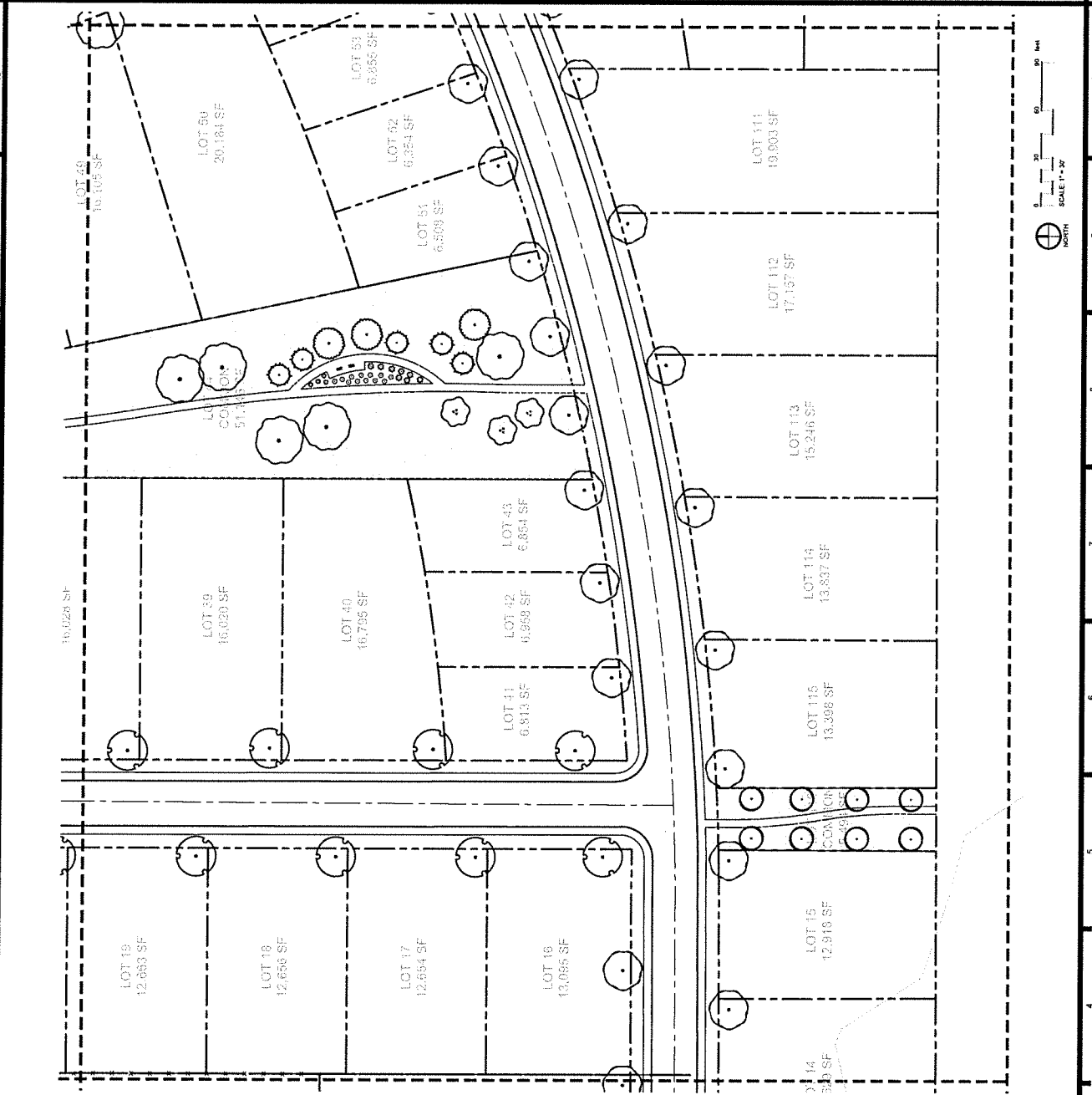
ROYAL RIDGE
 GREENE.F.P. ID

| REVISION | DATE | DESCRIPTION |
|----------|----------|-------------------|
| 1 | 11/11/11 | ISSUED FOR PERMIT |

| | |
|-----------------------|----------------------|
| DATE: 11/11/11 | SCALE: 1" = 30' |
| PROJECT: ROYAL RIDGE | SHEET: L103 |
| DESIGNER: [Signature] | CHECKED: [Signature] |
| DATE: 11/11/11 | SCALE: 1" = 30' |

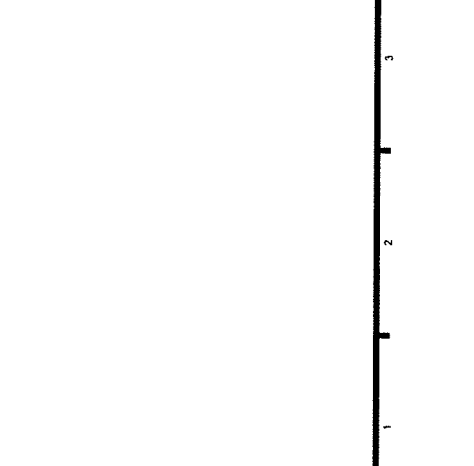
LANDSCAPE
 PLAN - AREA 3

SHEET NUMBER
L103



| TREES | BEHAVIORAL/COMMON NAME | CODE | CAL. | SIZE | QTY |
|-------|---------------------------------------|------|------|------|-----|
| 1 | Live Oak / Common Name / Primary Edge | SLB | 2" | 2" | 18 |
| 2 | Live Oak / Common Name / Primary Edge | SLB | 2" | 2" | 20 |
| 3 | Live Oak / Common Name / Primary Edge | SLB | 2" | 2" | 21 |
| 4 | Live Oak / Common Name / Primary Edge | SLB | 2" | 2" | 18 |
| 5 | Live Oak / Common Name / Primary Edge | SLB | 2" | 2" | 8 |
| 6 | Live Oak / Common Name / Primary Edge | SLB | 2" | 2" | 15 |
| 7 | Live Oak / Common Name / Primary Edge | SLB | 2" | 2" | 42 |
| 8 | Live Oak / Common Name / Primary Edge | SLB | 2" | 2" | 12 |
| 9 | Live Oak / Common Name / Primary Edge | SLB | 2" | 2" | 16 |
| 10 | Live Oak / Common Name / Primary Edge | SLB | 2" | 2" | 35 |
| 11 | Live Oak / Common Name / Primary Edge | SLB | 2" | 2" | 35 |
| 12 | Live Oak / Common Name / Primary Edge | SLB | 2" | 2" | 31 |
| 13 | Live Oak / Common Name / Primary Edge | SLB | 2" | 2" | 49 |

| TREES | BEHAVIORAL/COMMON NAME | CODE | CAL. | SIZE | QTY |
|-------|---------------------------------------|------|------|------|-----|
| 14 | Live Oak / Common Name / Primary Edge | SLB | 2" | 2" | 18 |
| 15 | Live Oak / Common Name / Primary Edge | SLB | 2" | 2" | 20 |
| 16 | Live Oak / Common Name / Primary Edge | SLB | 2" | 2" | 21 |
| 17 | Live Oak / Common Name / Primary Edge | SLB | 2" | 2" | 18 |
| 18 | Live Oak / Common Name / Primary Edge | SLB | 2" | 2" | 8 |
| 19 | Live Oak / Common Name / Primary Edge | SLB | 2" | 2" | 15 |
| 20 | Live Oak / Common Name / Primary Edge | SLB | 2" | 2" | 42 |
| 21 | Live Oak / Common Name / Primary Edge | SLB | 2" | 2" | 12 |
| 22 | Live Oak / Common Name / Primary Edge | SLB | 2" | 2" | 16 |
| 23 | Live Oak / Common Name / Primary Edge | SLB | 2" | 2" | 35 |
| 24 | Live Oak / Common Name / Primary Edge | SLB | 2" | 2" | 35 |
| 25 | Live Oak / Common Name / Primary Edge | SLB | 2" | 2" | 31 |
| 26 | Live Oak / Common Name / Primary Edge | SLB | 2" | 2" | 49 |





STOCK ROCK GROUP
ARCHITECTURE
& INTERIOR PLANNING

(904) 348-0999
4000 N. W. 11th St.
Suite 201, Ft. Lauderdale, FL 33304
StockRockGroup.com

VULET C. HOWARD, P.A.
ON BEHALF OF STOCK ROCK GROUP, INC.
10000 W. BOULEVARD, SUITE 100
FORT LAUDERDALE, FL 33324

THE GRAPHICS AND DESIGNS
HEREIN ARE THE PROPERTY OF
STOCK ROCK GROUP, INC.
AND ARE NOT TO BE REPRODUCED
OR TRANSMITTED IN ANY FORM
OR BY ANY MEANS, ELECTRONIC
OR MECHANICAL, INCLUDING
PHOTOCOPYING, RECORDING,
OR BY ANY INFORMATION
STORAGE AND RETRIEVAL
SYSTEM, WITHOUT THE WRITTEN
CONSENT OF STOCK ROCK
GROUP, INC.

ROCK GROUP, INC.
8001 STACK
FORT LAUDERDALE, FL 33304

DATE: 08/11/2011
DRAWN BY: J. B. GARDNER
CHECKED BY: J. B. GARDNER
APPROVED BY: J. B. GARDNER

NOT FOR CONSTRUCTION

GREENLEAF ID: _____

REVISIONS

| NO. | DATE | DESCRIPTION |
|-----|------------|-------------------|
| 1 | 08/11/2011 | ISSUED FOR PERMIT |

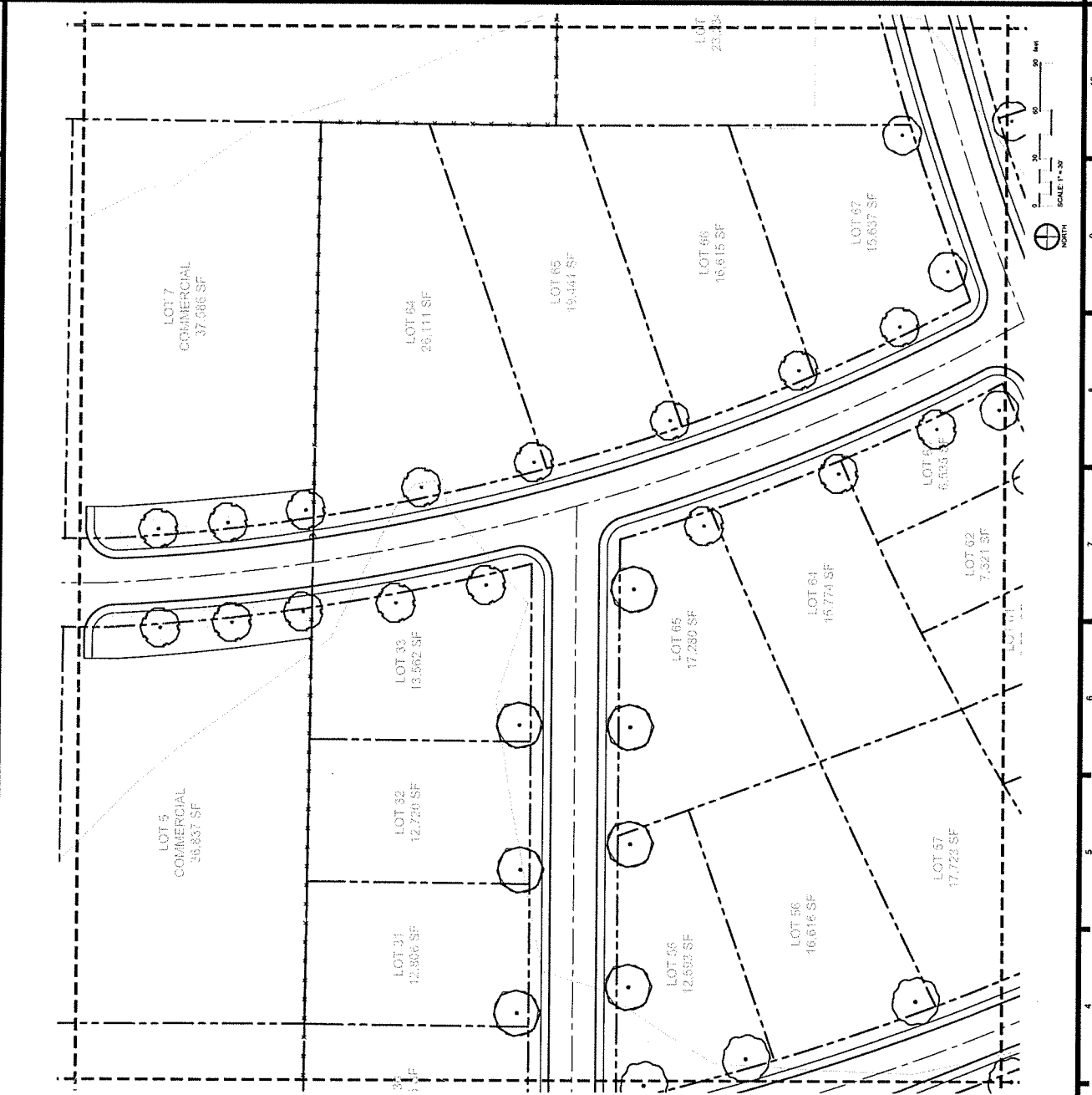
LANDSCAPE PLAN - AREA 4

PROJECT TITLE

ROYAL RIDGE

SHEET NUMBER

L104



PLANT SCHEDULE

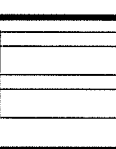
| TREES | BOTANICAL COMMON NAME | CONT. | CAL. | SIZE | CITY |
|-------|--|-------|------|------|------|
| 1 | Star Jasmine / Common Laurel / Fantasy Maple | 5/8" | 2" | 12' | 28 |
| 2 | Star Jasmine / Common Laurel / Fantasy Maple | 5/8" | 2" | 12' | 28 |
| 3 | Star Jasmine / Common Laurel / Fantasy Maple | 5/8" | 2" | 12' | 28 |
| 4 | Star Jasmine / Common Laurel / Fantasy Maple | 5/8" | 2" | 12' | 28 |
| 5 | Star Jasmine / Common Laurel / Fantasy Maple | 5/8" | 2" | 12' | 28 |
| 6 | Star Jasmine / Common Laurel / Fantasy Maple | 5/8" | 2" | 12' | 28 |
| 7 | Star Jasmine / Common Laurel / Fantasy Maple | 5/8" | 2" | 12' | 28 |
| 8 | Star Jasmine / Common Laurel / Fantasy Maple | 5/8" | 2" | 12' | 28 |
| 9 | Star Jasmine / Common Laurel / Fantasy Maple | 5/8" | 2" | 12' | 28 |
| 10 | Star Jasmine / Common Laurel / Fantasy Maple | 5/8" | 2" | 12' | 28 |
| 11 | Star Jasmine / Common Laurel / Fantasy Maple | 5/8" | 2" | 12' | 28 |
| 12 | Star Jasmine / Common Laurel / Fantasy Maple | 5/8" | 2" | 12' | 28 |
| 13 | Star Jasmine / Common Laurel / Fantasy Maple | 5/8" | 2" | 12' | 28 |
| 14 | Star Jasmine / Common Laurel / Fantasy Maple | 5/8" | 2" | 12' | 28 |
| 15 | Star Jasmine / Common Laurel / Fantasy Maple | 5/8" | 2" | 12' | 28 |
| 16 | Star Jasmine / Common Laurel / Fantasy Maple | 5/8" | 2" | 12' | 28 |
| 17 | Star Jasmine / Common Laurel / Fantasy Maple | 5/8" | 2" | 12' | 28 |
| 18 | Star Jasmine / Common Laurel / Fantasy Maple | 5/8" | 2" | 12' | 28 |
| 19 | Star Jasmine / Common Laurel / Fantasy Maple | 5/8" | 2" | 12' | 28 |
| 20 | Star Jasmine / Common Laurel / Fantasy Maple | 5/8" | 2" | 12' | 28 |
| 21 | Star Jasmine / Common Laurel / Fantasy Maple | 5/8" | 2" | 12' | 28 |
| 22 | Star Jasmine / Common Laurel / Fantasy Maple | 5/8" | 2" | 12' | 28 |
| 23 | Star Jasmine / Common Laurel / Fantasy Maple | 5/8" | 2" | 12' | 28 |
| 24 | Star Jasmine / Common Laurel / Fantasy Maple | 5/8" | 2" | 12' | 28 |
| 25 | Star Jasmine / Common Laurel / Fantasy Maple | 5/8" | 2" | 12' | 28 |
| 26 | Star Jasmine / Common Laurel / Fantasy Maple | 5/8" | 2" | 12' | 28 |
| 27 | Star Jasmine / Common Laurel / Fantasy Maple | 5/8" | 2" | 12' | 28 |
| 28 | Star Jasmine / Common Laurel / Fantasy Maple | 5/8" | 2" | 12' | 28 |
| 29 | Star Jasmine / Common Laurel / Fantasy Maple | 5/8" | 2" | 12' | 28 |
| 30 | Star Jasmine / Common Laurel / Fantasy Maple | 5/8" | 2" | 12' | 28 |
| 31 | Star Jasmine / Common Laurel / Fantasy Maple | 5/8" | 2" | 12' | 28 |
| 32 | Star Jasmine / Common Laurel / Fantasy Maple | 5/8" | 2" | 12' | 28 |
| 33 | Star Jasmine / Common Laurel / Fantasy Maple | 5/8" | 2" | 12' | 28 |
| 34 | Star Jasmine / Common Laurel / Fantasy Maple | 5/8" | 2" | 12' | 28 |
| 35 | Star Jasmine / Common Laurel / Fantasy Maple | 5/8" | 2" | 12' | 28 |
| 36 | Star Jasmine / Common Laurel / Fantasy Maple | 5/8" | 2" | 12' | 28 |
| 37 | Star Jasmine / Common Laurel / Fantasy Maple | 5/8" | 2" | 12' | 28 |
| 38 | Star Jasmine / Common Laurel / Fantasy Maple | 5/8" | 2" | 12' | 28 |
| 39 | Star Jasmine / Common Laurel / Fantasy Maple | 5/8" | 2" | 12' | 28 |
| 40 | Star Jasmine / Common Laurel / Fantasy Maple | 5/8" | 2" | 12' | 28 |
| 41 | Star Jasmine / Common Laurel / Fantasy Maple | 5/8" | 2" | 12' | 28 |
| 42 | Star Jasmine / Common Laurel / Fantasy Maple | 5/8" | 2" | 12' | 28 |
| 43 | Star Jasmine / Common Laurel / Fantasy Maple | 5/8" | 2" | 12' | 28 |
| 44 | Star Jasmine / Common Laurel / Fantasy Maple | 5/8" | 2" | 12' | 28 |
| 45 | Star Jasmine / Common Laurel / Fantasy Maple | 5/8" | 2" | 12' | 28 |
| 46 | Star Jasmine / Common Laurel / Fantasy Maple | 5/8" | 2" | 12' | 28 |
| 47 | Star Jasmine / Common Laurel / Fantasy Maple | 5/8" | 2" | 12' | 28 |
| 48 | Star Jasmine / Common Laurel / Fantasy Maple | 5/8" | 2" | 12' | 28 |

LANDSCAPE MATERIALS LEGEND:

- 500 LAWN
- ROCK MULCH
- LANDSCAPE WOOD CHIPS
- OPEN FENCE
- PRODUCT FENCE

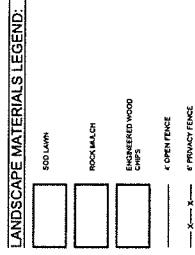
NOT FOR CONSTRUCTION

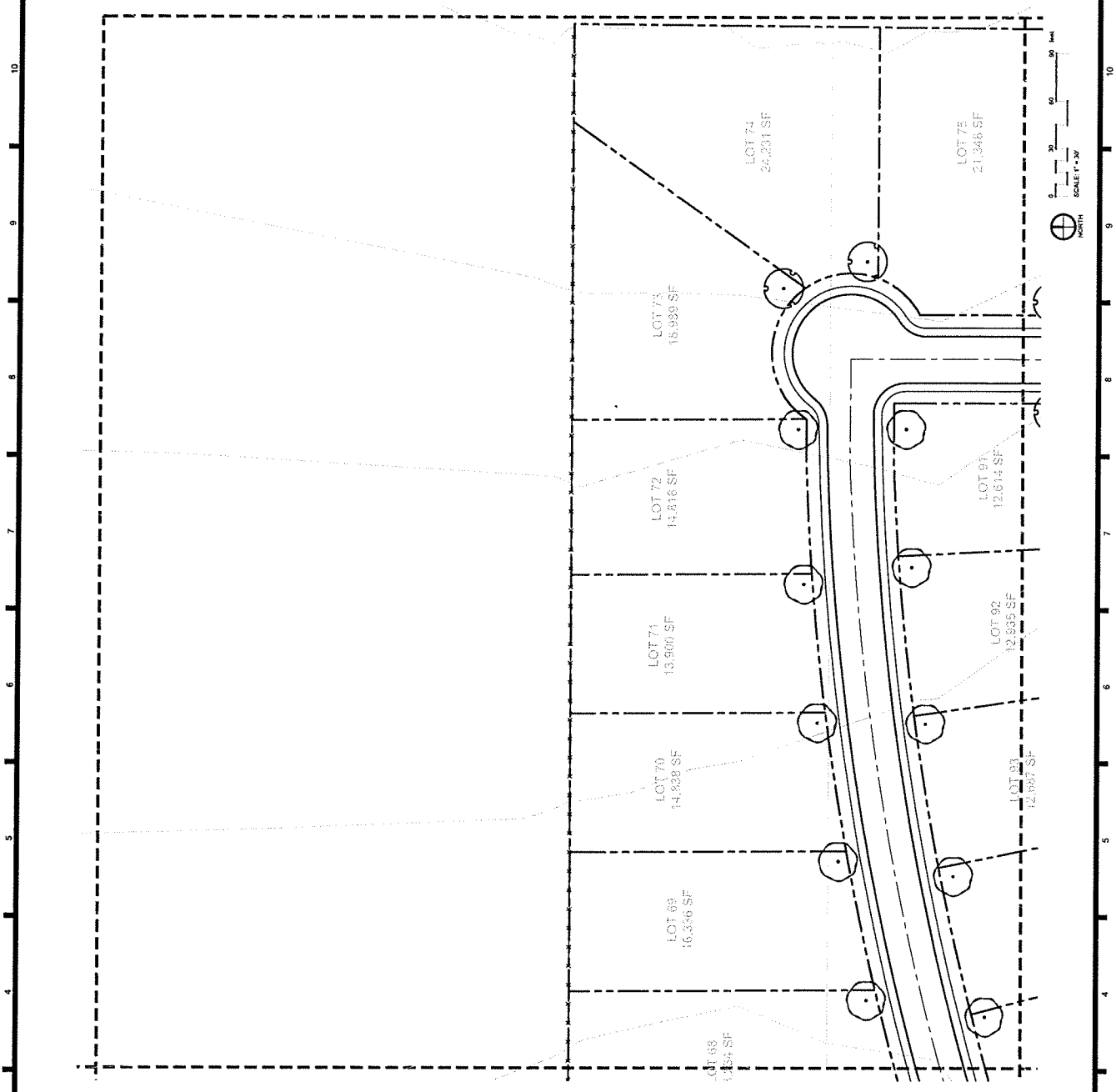
GREENLEAF ID



PLANT SCHEDULE

| TREES | BOTANICAL COMMON NAME | CONT. | CAL. | SIZE | QTY |
|-------|---|-------|------|------|-----|
| 1 | Blue Alder / Common Birch / Primary Maple | 5/8" | 2" | 2' | 28 |
| 2 | Red Alder / Common Birch / Primary Maple | 5/8" | 2" | 2' | 28 |
| 3 | Common Juniper / Juniper | 5/8" | 2" | 2' | 21 |
| 4 | Common Juniper / Juniper | 5/8" | 2" | 2' | 14 |
| 5 | Common Juniper / Juniper | 5/8" | 2" | 2' | 8 |
| 6 | Common Juniper / Juniper | 5/8" | 2" | 2' | 15 |
| 7 | Common Juniper / Juniper | 5/8" | 2" | 2' | 12 |
| 8 | Common Juniper / Juniper | 5/8" | 2" | 2' | 12 |
| 9 | Common Juniper / Juniper | 5/8" | 2" | 2' | 12 |
| 10 | Common Juniper / Juniper | 5/8" | 2" | 2' | 12 |
| 11 | Common Juniper / Juniper | 5/8" | 2" | 2' | 12 |
| 12 | Common Juniper / Juniper | 5/8" | 2" | 2' | 12 |
| 13 | Common Juniper / Juniper | 5/8" | 2" | 2' | 12 |
| 14 | Common Juniper / Juniper | 5/8" | 2" | 2' | 12 |
| 15 | Common Juniper / Juniper | 5/8" | 2" | 2' | 12 |
| 16 | Common Juniper / Juniper | 5/8" | 2" | 2' | 12 |
| 17 | Common Juniper / Juniper | 5/8" | 2" | 2' | 12 |
| 18 | Common Juniper / Juniper | 5/8" | 2" | 2' | 12 |
| 19 | Common Juniper / Juniper | 5/8" | 2" | 2' | 12 |
| 20 | Common Juniper / Juniper | 5/8" | 2" | 2' | 12 |
| 21 | Common Juniper / Juniper | 5/8" | 2" | 2' | 12 |
| 22 | Common Juniper / Juniper | 5/8" | 2" | 2' | 12 |
| 23 | Common Juniper / Juniper | 5/8" | 2" | 2' | 12 |
| 24 | Common Juniper / Juniper | 5/8" | 2" | 2' | 12 |
| 25 | Common Juniper / Juniper | 5/8" | 2" | 2' | 12 |
| 26 | Common Juniper / Juniper | 5/8" | 2" | 2' | 12 |
| 27 | Common Juniper / Juniper | 5/8" | 2" | 2' | 12 |
| 28 | Common Juniper / Juniper | 5/8" | 2" | 2' | 12 |
| 29 | Common Juniper / Juniper | 5/8" | 2" | 2' | 12 |
| 30 | Common Juniper / Juniper | 5/8" | 2" | 2' | 12 |
| 31 | Common Juniper / Juniper | 5/8" | 2" | 2' | 12 |
| 32 | Common Juniper / Juniper | 5/8" | 2" | 2' | 12 |
| 33 | Common Juniper / Juniper | 5/8" | 2" | 2' | 12 |
| 34 | Common Juniper / Juniper | 5/8" | 2" | 2' | 12 |
| 35 | Common Juniper / Juniper | 5/8" | 2" | 2' | 12 |
| 36 | Common Juniper / Juniper | 5/8" | 2" | 2' | 12 |
| 37 | Common Juniper / Juniper | 5/8" | 2" | 2' | 12 |
| 38 | Common Juniper / Juniper | 5/8" | 2" | 2' | 12 |
| 39 | Common Juniper / Juniper | 5/8" | 2" | 2' | 12 |
| 40 | Common Juniper / Juniper | 5/8" | 2" | 2' | 12 |
| 41 | Common Juniper / Juniper | 5/8" | 2" | 2' | 12 |
| 42 | Common Juniper / Juniper | 5/8" | 2" | 2' | 12 |
| 43 | Common Juniper / Juniper | 5/8" | 2" | 2' | 12 |
| 44 | Common Juniper / Juniper | 5/8" | 2" | 2' | 12 |
| 45 | Common Juniper / Juniper | 5/8" | 2" | 2' | 12 |
| 46 | Common Juniper / Juniper | 5/8" | 2" | 2' | 12 |
| 47 | Common Juniper / Juniper | 5/8" | 2" | 2' | 12 |
| 48 | Common Juniper / Juniper | 5/8" | 2" | 2' | 12 |
| 49 | Common Juniper / Juniper | 5/8" | 2" | 2' | 12 |
| 50 | Common Juniper / Juniper | 5/8" | 2" | 2' | 12 |
| 51 | Common Juniper / Juniper | 5/8" | 2" | 2' | 12 |
| 52 | Common Juniper / Juniper | 5/8" | 2" | 2' | 12 |
| 53 | Common Juniper / Juniper | 5/8" | 2" | 2' | 12 |
| 54 | Common Juniper / Juniper | 5/8" | 2" | 2' | 12 |
| 55 | Common Juniper / Juniper | 5/8" | 2" | 2' | 12 |
| 56 | Common Juniper / Juniper | 5/8" | 2" | 2' | 12 |
| 57 | Common Juniper / Juniper | 5/8" | 2" | 2' | 12 |
| 58 | Common Juniper / Juniper | 5/8" | 2" | 2' | 12 |
| 59 | Common Juniper / Juniper | 5/8" | 2" | 2' | 12 |
| 60 | Common Juniper / Juniper | 5/8" | 2" | 2' | 12 |
| 61 | Common Juniper / Juniper | 5/8" | 2" | 2' | 12 |
| 62 | Common Juniper / Juniper | 5/8" | 2" | 2' | 12 |
| 63 | Common Juniper / Juniper | 5/8" | 2" | 2' | 12 |
| 64 | Common Juniper / Juniper | 5/8" | 2" | 2' | 12 |
| 65 | Common Juniper / Juniper | 5/8" | 2" | 2' | 12 |
| 66 | Common Juniper / Juniper | 5/8" | 2" | 2' | 12 |
| 67 | Common Juniper / Juniper | 5/8" | 2" | 2' | 12 |
| 68 | Common Juniper / Juniper | 5/8" | 2" | 2' | 12 |
| 69 | Common Juniper / Juniper | 5/8" | 2" | 2' | 12 |
| 70 | Common Juniper / Juniper | 5/8" | 2" | 2' | 12 |
| 71 | Common Juniper / Juniper | 5/8" | 2" | 2' | 12 |
| 72 | Common Juniper / Juniper | 5/8" | 2" | 2' | 12 |
| 73 | Common Juniper / Juniper | 5/8" | 2" | 2' | 12 |
| 74 | Common Juniper / Juniper | 5/8" | 2" | 2' | 12 |
| 75 | Common Juniper / Juniper | 5/8" | 2" | 2' | 12 |
| 76 | Common Juniper / Juniper | 5/8" | 2" | 2' | 12 |
| 77 | Common Juniper / Juniper | 5/8" | 2" | 2' | 12 |
| 78 | Common Juniper / Juniper | 5/8" | 2" | 2' | 12 |
| 79 | Common Juniper / Juniper | 5/8" | 2" | 2' | 12 |
| 80 | Common Juniper / Juniper | 5/8" | 2" | 2' | 12 |
| 81 | Common Juniper / Juniper | 5/8" | 2" | 2' | 12 |
| 82 | Common Juniper / Juniper | 5/8" | 2" | 2' | 12 |
| 83 | Common Juniper / Juniper | 5/8" | 2" | 2' | 12 |
| 84 | Common Juniper / Juniper | 5/8" | 2" | 2' | 12 |
| 85 | Common Juniper / Juniper | 5/8" | 2" | 2' | 12 |
| 86 | Common Juniper / Juniper | 5/8" | 2" | 2' | 12 |
| 87 | Common Juniper / Juniper | 5/8" | 2" | 2' | 12 |
| 88 | Common Juniper / Juniper | 5/8" | 2" | 2' | 12 |
| 89 | Common Juniper / Juniper | 5/8" | 2" | 2' | 12 |
| 90 | Common Juniper / Juniper | 5/8" | 2" | 2' | 12 |
| 91 | Common Juniper / Juniper | 5/8" | 2" | 2' | 12 |
| 92 | Common Juniper / Juniper | 5/8" | 2" | 2' | 12 |
| 93 | Common Juniper / Juniper | 5/8" | 2" | 2' | 12 |
| 94 | Common Juniper / Juniper | 5/8" | 2" | 2' | 12 |
| 95 | Common Juniper / Juniper | 5/8" | 2" | 2' | 12 |
| 96 | Common Juniper / Juniper | 5/8" | 2" | 2' | 12 |
| 97 | Common Juniper / Juniper | 5/8" | 2" | 2' | 12 |
| 98 | Common Juniper / Juniper | 5/8" | 2" | 2' | 12 |
| 99 | Common Juniper / Juniper | 5/8" | 2" | 2' | 12 |
| 100 | Common Juniper / Juniper | 5/8" | 2" | 2' | 12 |
| 101 | Common Juniper / Juniper | 5/8" | 2" | 2' | 12 |
| 102 | Common Juniper / Juniper | 5/8" | 2" | 2' | 12 |
| 103 | Common Juniper / Juniper | 5/8" | 2" | 2' | 12 |
| 104 | Common Juniper / Juniper | 5/8" | 2" | 2' | 12 |
| 105 | Common Juniper / Juniper | 5/8" | 2" | 2' | 12 |
| 106 | Common Juniper / Juniper | 5/8" | 2" | 2' | 12 |
| 107 | Common Juniper / Juniper | 5/8" | 2" | 2' | 12 |
| 108 | Common Juniper / Juniper | 5/8" | 2" | 2' | 12 |
| 109 | Common Juniper / Juniper | 5/8" | 2" | 2' | 12 |
| 110 | Common Juniper / Juniper | 5/8" | 2" | 2' | 12 |





PLANT SCHEDULE

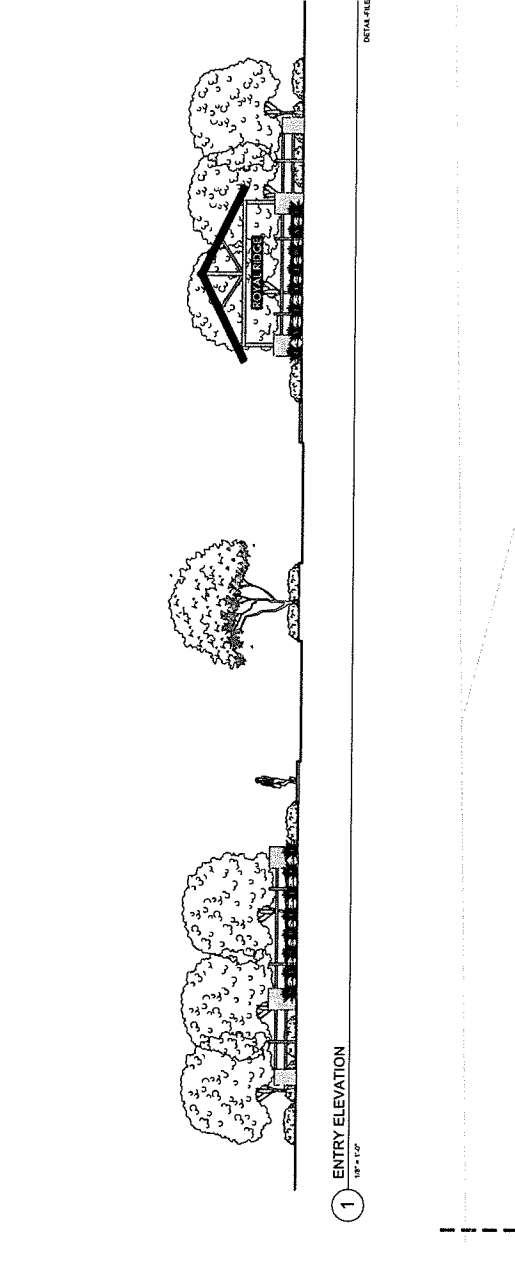
| TREES | BOTANICAL COMMON NAME | CONT. | CAL. | SIZE | QTY |
|-------|--|-------|------|------|-----|
| 1 | Acacia saligna / Golden Wattle / Fairy Wattle CLASS 1 | 500 | 2" | 18" | 28 |
| 2 | Acacia saligna / Golden Wattle / Fairy Wattle CLASS 1 | 500 | 2" | 18" | 28 |
| 3 | Calluna heisteria / Heath / Heath CLASS 1 | 500 | 2" | 18" | 21 |
| 4 | Calluna heisteria / Heath / Heath CLASS 1 | 500 | 2" | 18" | 14 |
| 5 | Calluna heisteria / Heath / Heath CLASS 1 | 500 | 2" | 18" | 12 |
| 6 | Calluna heisteria / Heath / Heath CLASS 1 | 500 | 2" | 18" | 18 |
| 7 | Calluna heisteria / Heath / Heath CLASS 1 | 500 | 2" | 18" | 18 |
| 8 | Calluna heisteria / Heath / Heath CLASS 1 | 500 | 2" | 18" | 18 |
| 9 | Calluna heisteria / Heath / Heath CLASS 1 | 500 | 2" | 18" | 18 |
| 10 | Calluna heisteria / Heath / Heath CLASS 1 | 500 | 2" | 18" | 18 |
| 11 | Calluna heisteria / Heath / Heath CLASS 1 | 500 | 2" | 18" | 18 |
| 12 | Calluna heisteria / Heath / Heath CLASS 1 | 500 | 2" | 18" | 18 |
| 13 | Calluna heisteria / Heath / Heath CLASS 1 | 500 | 2" | 18" | 18 |
| 14 | Calluna heisteria / Heath / Heath CLASS 1 | 500 | 2" | 18" | 18 |
| 15 | Calluna heisteria / Heath / Heath CLASS 1 | 500 | 2" | 18" | 18 |
| 16 | Calluna heisteria / Heath / Heath CLASS 1 | 500 | 2" | 18" | 18 |
| 17 | Calluna heisteria / Heath / Heath CLASS 1 | 500 | 2" | 18" | 18 |
| 18 | Calluna heisteria / Heath / Heath CLASS 1 | 500 | 2" | 18" | 18 |
| 19 | Calluna heisteria / Heath / Heath CLASS 1 | 500 | 2" | 18" | 18 |
| 20 | Calluna heisteria / Heath / Heath CLASS 1 | 500 | 2" | 18" | 18 |
| 21 | Calluna heisteria / Heath / Heath CLASS 1 | 500 | 2" | 18" | 18 |
| 22 | Calluna heisteria / Heath / Heath CLASS 1 | 500 | 2" | 18" | 18 |
| 23 | Calluna heisteria / Heath / Heath CLASS 1 | 500 | 2" | 18" | 18 |
| 24 | Calluna heisteria / Heath / Heath CLASS 1 | 500 | 2" | 18" | 18 |
| 25 | Calluna heisteria / Heath / Heath CLASS 1 | 500 | 2" | 18" | 18 |
| 26 | Calluna heisteria / Heath / Heath CLASS 1 | 500 | 2" | 18" | 18 |
| 27 | Calluna heisteria / Heath / Heath CLASS 1 | 500 | 2" | 18" | 18 |
| 28 | Calluna heisteria / Heath / Heath CLASS 1 | 500 | 2" | 18" | 18 |
| 29 | Calluna heisteria / Heath / Heath CLASS 1 | 500 | 2" | 18" | 18 |
| 30 | Calluna heisteria / Heath / Heath CLASS 1 | 500 | 2" | 18" | 18 |
| 31 | Calluna heisteria / Heath / Heath CLASS 1 | 500 | 2" | 18" | 18 |
| 32 | Calluna heisteria / Heath / Heath CLASS 1 | 500 | 2" | 18" | 18 |
| 33 | Calluna heisteria / Heath / Heath CLASS 1 | 500 | 2" | 18" | 18 |
| 34 | Calluna heisteria / Heath / Heath CLASS 1 | 500 | 2" | 18" | 18 |
| 35 | Calluna heisteria / Heath / Heath CLASS 1 | 500 | 2" | 18" | 18 |
| 36 | Calluna heisteria / Heath / Heath CLASS 1 | 500 | 2" | 18" | 18 |
| 37 | Calluna heisteria / Heath / Heath CLASS 1 | 500 | 2" | 18" | 18 |
| 38 | Calluna heisteria / Heath / Heath CLASS 1 | 500 | 2" | 18" | 18 |
| 39 | Calluna heisteria / Heath / Heath CLASS 1 | 500 | 2" | 18" | 18 |
| 40 | Calluna heisteria / Heath / Heath CLASS 1 | 500 | 2" | 18" | 18 |
| 41 | Calluna heisteria / Heath / Heath CLASS 1 | 500 | 2" | 18" | 18 |
| 42 | Calluna heisteria / Heath / Heath CLASS 1 | 500 | 2" | 18" | 18 |
| 43 | Calluna heisteria / Heath / Heath CLASS 1 | 500 | 2" | 18" | 18 |
| 44 | Calluna heisteria / Heath / Heath CLASS 1 | 500 | 2" | 18" | 18 |
| 45 | Calluna heisteria / Heath / Heath CLASS 1 | 500 | 2" | 18" | 18 |
| 46 | Calluna heisteria / Heath / Heath CLASS 1 | 500 | 2" | 18" | 18 |
| 47 | Calluna heisteria / Heath / Heath CLASS 1 | 500 | 2" | 18" | 18 |
| 48 | Calluna heisteria / Heath / Heath CLASS 1 | 500 | 2" | 18" | 18 |
| 49 | Calluna heisteria / Heath / Heath CLASS 1 | 500 | 2" | 18" | 18 |

LANDSCAPE MATERIALS LEGEND:

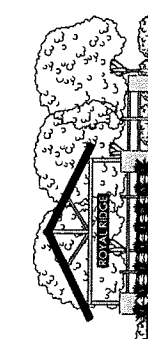
- 500 LAWN
- ROCKMULCH
- ENGINEERED WOOD CHIPS
- OPEN FENCE
- FRONT FENCE

| TREES | BEST PRACTICAL COMMON NAME | CONT. | CA. | SIZE | QTY |
|-------|---|-------|-----|------|-----|
| 1 | Amelanchier / Common Blueberry / Flamingo Honey CLASS B | 300 | 2" | 12' | 28 |
| 2 | Asarum canadense / Common Spicebush / Common Spicebush Maple CLASS B | 300 | 2" | 12' | 25 |
| 3 | Asarum canadense / Common Spicebush / Flamingo Honey CLASS B | 300 | 2" | 12' | 21 |
| 4 | Asarum canadense / Common Spicebush CLASS B | 300 | 2" | 12' | 18 |
| 5 | Asarum canadense / Common Spicebush CLASS B | 300 | 2" | 12' | 6 |
| 6 | Asarum canadense / Common Spicebush CLASS B | 300 | 2" | 12' | 15 |
| 7 | Asarum canadense / Common Spicebush CLASS B | 300 | 2" | 12' | 42 |
| 8 | Asarum canadense / Common Spicebush CLASS B | 300 | 2" | 12' | 12 |
| 9 | Asarum canadense / Common Spicebush CLASS B | 300 | 2" | 12' | 18 |
| 10 | Asarum canadense / Common Spicebush CLASS B | 300 | 2" | 12' | 19 |
| 11 | Asarum canadense / Common Spicebush CLASS B | 300 | 2" | 12' | 15 |
| 12 | Asarum canadense / Common Spicebush CLASS B | 300 | 2" | 12' | 15 |
| 13 | Asarum canadense / Common Spicebush CLASS B | 300 | 2" | 12' | 15 |
| 14 | Asarum canadense / Common Spicebush CLASS B | 300 | 2" | 12' | 15 |
| 15 | Asarum canadense / Common Spicebush CLASS B | 300 | 2" | 12' | 15 |
| 16 | Asarum canadense / Common Spicebush CLASS B | 300 | 2" | 12' | 15 |
| 17 | Asarum canadense / Common Spicebush CLASS B | 300 | 2" | 12' | 15 |
| 18 | Asarum canadense / Common Spicebush CLASS B | 300 | 2" | 12' | 15 |
| 19 | Asarum canadense / Common Spicebush CLASS B | 300 | 2" | 12' | 15 |
| 20 | Asarum canadense / Common Spicebush CLASS B | 300 | 2" | 12' | 15 |
| 21 | Asarum canadense / Common Spicebush CLASS B | 300 | 2" | 12' | 15 |
| 22 | Asarum canadense / Common Spicebush CLASS B | 300 | 2" | 12' | 15 |
| 23 | Asarum canadense / Common Spicebush CLASS B | 300 | 2" | 12' | 15 |
| 24 | Asarum canadense / Common Spicebush CLASS B | 300 | 2" | 12' | 15 |
| 25 | Asarum canadense / Common Spicebush CLASS B | 300 | 2" | 12' | 15 |
| 26 | Asarum canadense / Common Spicebush CLASS B | 300 | 2" | 12' | 15 |
| 27 | Asarum canadense / Common Spicebush CLASS B | 300 | 2" | 12' | 15 |
| 28 | Asarum canadense / Common Spicebush CLASS B | 300 | 2" | 12' | 15 |
| 29 | Asarum canadense / Common Spicebush CLASS B | 300 | 2" | 12' | 15 |
| 30 | Asarum canadense / Common Spicebush CLASS B | 300 | 2" | 12' | 15 |
| 31 | Asarum canadense / Common Spicebush CLASS B | 300 | 2" | 12' | 15 |
| 32 | Asarum canadense / Common Spicebush CLASS B | 300 | 2" | 12' | 15 |
| 33 | Asarum canadense / Common Spicebush CLASS B | 300 | 2" | 12' | 15 |
| 34 | Asarum canadense / Common Spicebush CLASS B | 300 | 2" | 12' | 15 |
| 35 | Asarum canadense / Common Spicebush CLASS B | 300 | 2" | 12' | 15 |
| 36 | Asarum canadense / Common Spicebush CLASS B | 300 | 2" | 12' | 15 |
| 37 | Asarum canadense / Common Spicebush CLASS B | 300 | 2" | 12' | 15 |
| 38 | Asarum canadense / Common Spicebush CLASS B | 300 | 2" | 12' | 15 |
| 39 | Asarum canadense / Common Spicebush CLASS B | 300 | 2" | 12' | 15 |
| 40 | Asarum canadense / Common Spicebush CLASS B | 300 | 2" | 12' | 15 |
| 41 | Asarum canadense / Common Spicebush CLASS B | 300 | 2" | 12' | 15 |
| 42 | Asarum canadense / Common Spicebush CLASS B | 300 | 2" | 12' | 15 |
| 43 | Asarum canadense / Common Spicebush CLASS B | 300 | 2" | 12' | 15 |
| 44 | Asarum canadense / Common Spicebush CLASS B | 300 | 2" | 12' | 15 |
| 45 | Asarum canadense / Common Spicebush CLASS B | 300 | 2" | 12' | 15 |
| 46 | Asarum canadense / Common Spicebush CLASS B | 300 | 2" | 12' | 15 |
| 47 | Asarum canadense / Common Spicebush CLASS B | 300 | 2" | 12' | 15 |
| 48 | Asarum canadense / Common Spicebush CLASS B | 300 | 2" | 12' | 15 |
| 49 | Asarum canadense / Common Spicebush CLASS B | 300 | 2" | 12' | 15 |
| 50 | Asarum canadense / Common Spicebush CLASS B | 300 | 2" | 12' | 15 |

- LANDSCAPE MATERIALS LEGEND:**
- ROD LAWN
 - ROCK MULCH
 - ENGINEERED WOOD CHIPS
 - OPEN FENCE
 - PRIVACY FENCE



1 ENTRY ELEVATION
1/8" = 1'-0"



NOT FOR CONSTRUCTION

ROYAL RIDGE

GREENLEAF ID

PREPARED BY: [Signature]

DATE: 02/28/24

SCALE: 1/8" = 1'-0"

PROJECT TITLE: LANDSCAPE PLAN - AREA 8

SHEET NUMBER: L108

PRELIMINARY

THE SLACK ROCK GROUP
ARCHITECTURE
& LANDSCAPE PLANNING

1305 S. 46th Ave.
Suite 200
Denver, CO 80231

PHILIP C. HANCOCK, P.L.A.
Principal
philip@slackrockgroup.com

THE GRAPHICS AND DESIGNS
HEREIN ARE THE PROPERTY OF
SLACK ROCK GROUP. NO
REPRODUCTION OR
TRANSMISSION IN ANY
FORM OR BY ANY MEANS
WITHOUT THE WRITTEN
CONSENT OF SLACK
ROCK GROUP, INC.

THE GRAPHICS AND DESIGN
 INFORMATION CONTAINED
 HEREIN IS THE PROPERTY OF
 STOCK ROCK GROUP, INC.
 AND IS NOT TO BE REPRODUCED
 OR TRANSMITTED IN ANY
 FORM OR BY ANY MEANS,
 ELECTRONIC OR MECHANICAL,
 INCLUDING PHOTOCOPYING,
 RECORDING, OR BY ANY
 INFORMATION STORAGE AND
 RETRIEVAL SYSTEM, WITHOUT
 THE WRITTEN PERMISSION
 OF STOCK ROCK GROUP, INC.
 ROCK GROUP, INC.
 8001 STACK
 ROCK GROUP, INC.
 DATE: PRELIMINARY

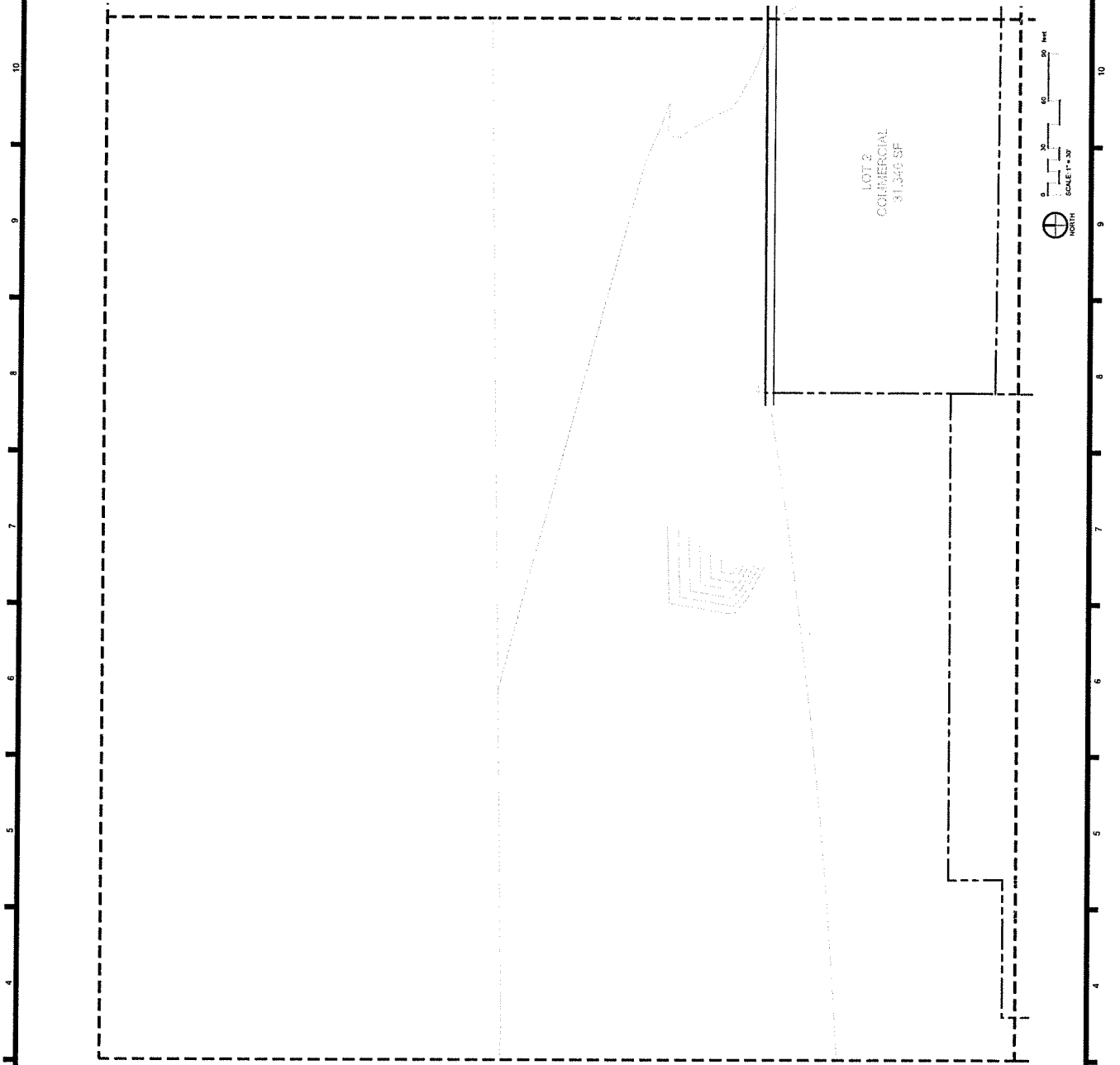
NOT FOR CONSTRUCTION

ROYAL RIDGE
 GREENLEAF ID

| | | |
|---------|----------|----------|
| PROJECT | DATE | SCALE |
| LOT 2 | 01/21/24 | 1" = 30' |

LANDSCAPE
 PLAN - AREA 9

SHEET NUMBER
L109



| TREES | BOTANICAL COMMON NAME | CONT. | CAL. | SIZE | QTY |
|-------|--|-------|------|------|-----|
| 1 | Acacia saligna / Golden Wattle / Golden Wattle | 54.8 | 2' | 10' | 24 |
| 2 | Acacia saligna / Golden Wattle / Golden Wattle | 54.8 | 2' | 10' | 24 |
| 3 | Acacia saligna / Golden Wattle / Golden Wattle | 54.8 | 2' | 10' | 24 |
| 4 | Acacia saligna / Golden Wattle / Golden Wattle | 54.8 | 2' | 10' | 24 |
| 5 | Acacia saligna / Golden Wattle / Golden Wattle | 54.8 | 2' | 10' | 24 |
| 6 | Acacia saligna / Golden Wattle / Golden Wattle | 54.8 | 2' | 10' | 24 |
| 7 | Acacia saligna / Golden Wattle / Golden Wattle | 54.8 | 2' | 10' | 24 |
| 8 | Acacia saligna / Golden Wattle / Golden Wattle | 54.8 | 2' | 10' | 24 |
| 9 | Acacia saligna / Golden Wattle / Golden Wattle | 54.8 | 2' | 10' | 24 |
| 10 | Acacia saligna / Golden Wattle / Golden Wattle | 54.8 | 2' | 10' | 24 |
| 11 | Acacia saligna / Golden Wattle / Golden Wattle | 54.8 | 2' | 10' | 24 |
| 12 | Acacia saligna / Golden Wattle / Golden Wattle | 54.8 | 2' | 10' | 24 |
| 13 | Acacia saligna / Golden Wattle / Golden Wattle | 54.8 | 2' | 10' | 24 |
| 14 | Acacia saligna / Golden Wattle / Golden Wattle | 54.8 | 2' | 10' | 24 |
| 15 | Acacia saligna / Golden Wattle / Golden Wattle | 54.8 | 2' | 10' | 24 |
| 16 | Acacia saligna / Golden Wattle / Golden Wattle | 54.8 | 2' | 10' | 24 |
| 17 | Acacia saligna / Golden Wattle / Golden Wattle | 54.8 | 2' | 10' | 24 |
| 18 | Acacia saligna / Golden Wattle / Golden Wattle | 54.8 | 2' | 10' | 24 |
| 19 | Acacia saligna / Golden Wattle / Golden Wattle | 54.8 | 2' | 10' | 24 |
| 20 | Acacia saligna / Golden Wattle / Golden Wattle | 54.8 | 2' | 10' | 24 |
| 21 | Acacia saligna / Golden Wattle / Golden Wattle | 54.8 | 2' | 10' | 24 |
| 22 | Acacia saligna / Golden Wattle / Golden Wattle | 54.8 | 2' | 10' | 24 |
| 23 | Acacia saligna / Golden Wattle / Golden Wattle | 54.8 | 2' | 10' | 24 |
| 24 | Acacia saligna / Golden Wattle / Golden Wattle | 54.8 | 2' | 10' | 24 |
| 25 | Acacia saligna / Golden Wattle / Golden Wattle | 54.8 | 2' | 10' | 24 |
| 26 | Acacia saligna / Golden Wattle / Golden Wattle | 54.8 | 2' | 10' | 24 |
| 27 | Acacia saligna / Golden Wattle / Golden Wattle | 54.8 | 2' | 10' | 24 |
| 28 | Acacia saligna / Golden Wattle / Golden Wattle | 54.8 | 2' | 10' | 24 |
| 29 | Acacia saligna / Golden Wattle / Golden Wattle | 54.8 | 2' | 10' | 24 |
| 30 | Acacia saligna / Golden Wattle / Golden Wattle | 54.8 | 2' | 10' | 24 |
| 31 | Acacia saligna / Golden Wattle / Golden Wattle | 54.8 | 2' | 10' | 24 |
| 32 | Acacia saligna / Golden Wattle / Golden Wattle | 54.8 | 2' | 10' | 24 |
| 33 | Acacia saligna / Golden Wattle / Golden Wattle | 54.8 | 2' | 10' | 24 |
| 34 | Acacia saligna / Golden Wattle / Golden Wattle | 54.8 | 2' | 10' | 24 |
| 35 | Acacia saligna / Golden Wattle / Golden Wattle | 54.8 | 2' | 10' | 24 |
| 36 | Acacia saligna / Golden Wattle / Golden Wattle | 54.8 | 2' | 10' | 24 |
| 37 | Acacia saligna / Golden Wattle / Golden Wattle | 54.8 | 2' | 10' | 24 |
| 38 | Acacia saligna / Golden Wattle / Golden Wattle | 54.8 | 2' | 10' | 24 |
| 39 | Acacia saligna / Golden Wattle / Golden Wattle | 54.8 | 2' | 10' | 24 |
| 40 | Acacia saligna / Golden Wattle / Golden Wattle | 54.8 | 2' | 10' | 24 |
| 41 | Acacia saligna / Golden Wattle / Golden Wattle | 54.8 | 2' | 10' | 24 |
| 42 | Acacia saligna / Golden Wattle / Golden Wattle | 54.8 | 2' | 10' | 24 |
| 43 | Acacia saligna / Golden Wattle / Golden Wattle | 54.8 | 2' | 10' | 24 |
| 44 | Acacia saligna / Golden Wattle / Golden Wattle | 54.8 | 2' | 10' | 24 |
| 45 | Acacia saligna / Golden Wattle / Golden Wattle | 54.8 | 2' | 10' | 24 |
| 46 | Acacia saligna / Golden Wattle / Golden Wattle | 54.8 | 2' | 10' | 24 |
| 47 | Acacia saligna / Golden Wattle / Golden Wattle | 54.8 | 2' | 10' | 24 |
| 48 | Acacia saligna / Golden Wattle / Golden Wattle | 54.8 | 2' | 10' | 24 |
| 49 | Acacia saligna / Golden Wattle / Golden Wattle | 54.8 | 2' | 10' | 24 |
| 50 | Acacia saligna / Golden Wattle / Golden Wattle | 54.8 | 2' | 10' | 24 |

