

State Highway 19 Through-Trip Analysis and Estimate

COMPASS completed an estimate of trips on State Highway 19 that pass through the City of Greenleaf. This analysis was at the request of the City of Greenleaf on February 2, 2024.

Two locations on State Highway 19 were selected 1) at Notus Road and 2) at Friends Road.

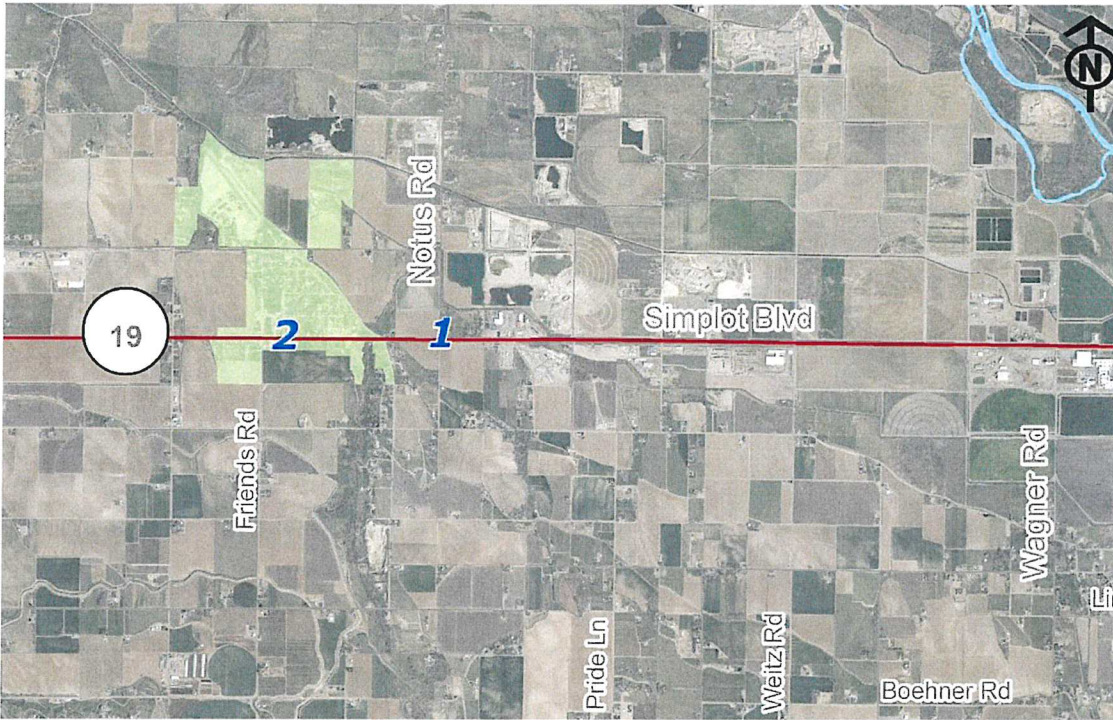


Figure 1: Approximate Locations for SH 19 Through-Trip Analysis

COMPASS used the Regional Travel Demand Forecast Model to conduct the “through-trip” analysis and estimate. The model’s primary inputs are the transportation system and its characteristics (e.g. type of roadway, number of lanes, and speed), demographics (e.g. population, households, and jobs) and various other parameters to estimate demand on the system. The model is a tool and analyses are intended to help inform decision making.

COMPASS used the model set representing the year 2023 for the State Highway 19 through-trip analysis. The estimates are as follows:

- 75% of the trips estimated by the model at location 1 (State Highway 19 and Notus Road) pass through the City of Greenleaf. This location was selected because Notus Road is a river crossing and immediately east of the City of Greenleaf.
- 90% of the trips estimated by the model at location 2 (State Highway 19 and Friends Road) pass through the City of Greenleaf. This location was selected because it was central to the City of Greenleaf.

The model does not estimate freight-related trips. Given the nature of the uses along State Highway 19 and that it is the primary east-west corridor connecting US 95 to I-84, the through-trip estimates seem reasonable.

RECEIVED

FEB 13 2024

Lib

City of Greenleaf, Idaho